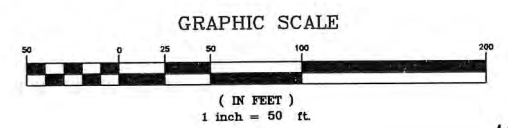


**NOTES:**  
 SEE SHEET 14 FOR S.W.P.P. PLAN NOTES, DIRECTIONS, AND SCHEDULE.  
 SEE SHEET 16 FOR CONTINUATION OF S.W.P.P. PLAN OF SITE.  
 SEE SHEETS 44 AND 45 FOR EROSION CONTROL DETAILS.

**BENCHMARK:**  
 EXISTING SANITARY MANHOLE M.C.S.E. GIS# 10288  
 STA. 14+51.22, 32.28' RT. SMOKERISE DRIVE  
 RIM = 1249.19'

- SYMBOLS**
- STORM SYMBOLS**
- - EXISTING STORM MANHOLE
  - - EXISTING STORM CURB BASIN
  - - EXISTING STORM CATCH BASIN
  - - PROPOSED STORM CATCH BASIN
- MISCELLANEOUS SYMBOLS**
- — — - SILT FENCE
  - - INLET PROTECTION
  - ▣ - CHECK DAM
  - ▣ - CONSTRUCTION DRIVE
  - ▣ - STAGING & MATERIAL STORAGE
  - WuB - HYDROLOGIC SOIL GROUP
  - ↑ - OVER LAND FLOOD ROUTE



SEE SHEET 16 OF 45.

— PLAN PREPARED BY —  
**LEWIS LAND PROFESSIONALS INC.**

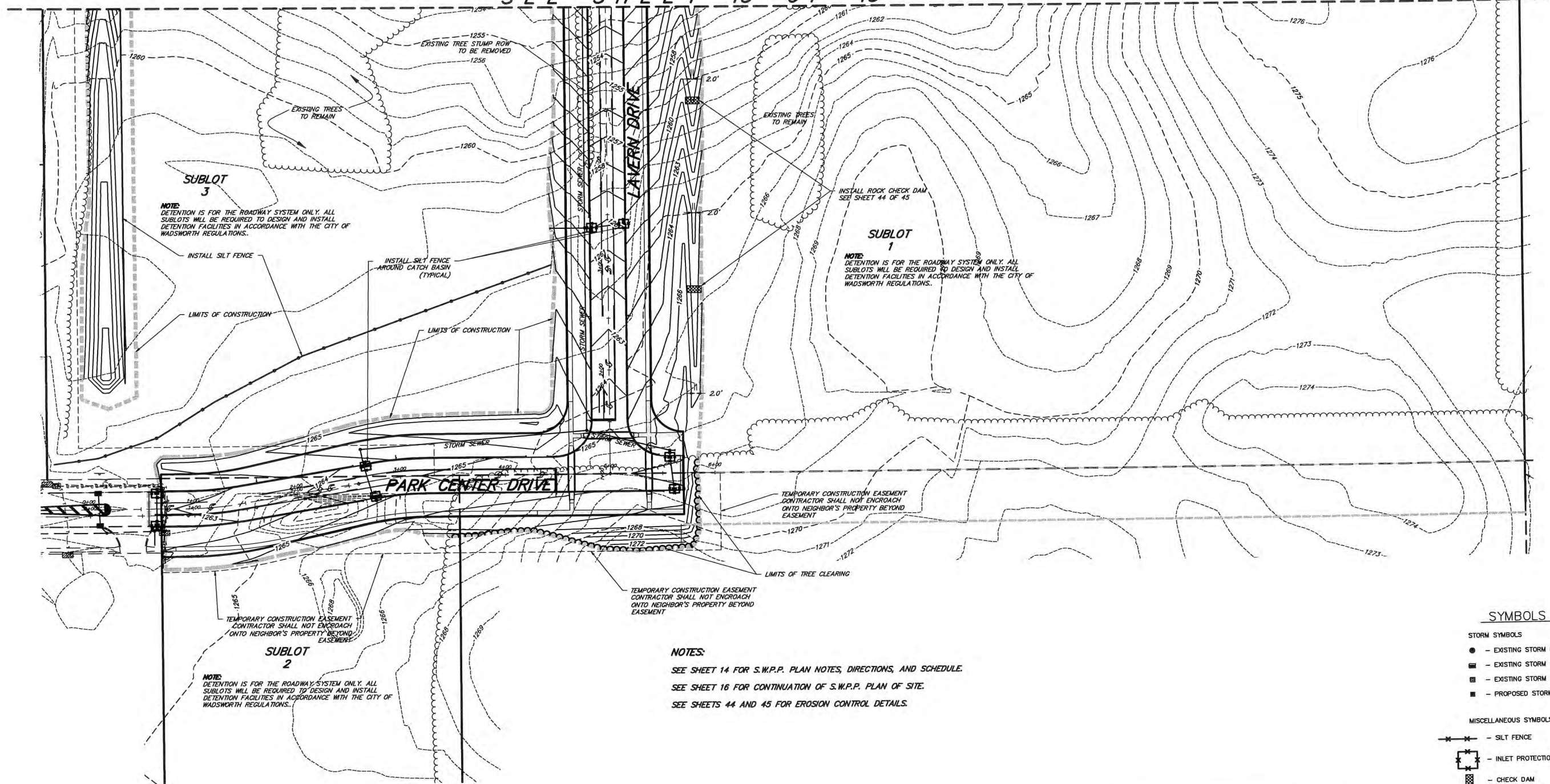
LEWIS LAND PROFESSIONALS CIVIL ENGINEERING LAND SURVEYING  
 8691 WADSWORTH ROAD SUITE 100  
 WADSWORTH, OH 44281 (330) 335-8232

E:\2014\2014-00-09\14-06\14-063\14-063 SHPP PLAN 1.DWG

M.C.S.E PROJECT #S-900/00-54.1

RECALC: 9/20/16 REV: 12/16/15  
 REV: 2/3/2016 REV: 10/29/2015  
 DRAWN BY: TAW DATE: 9/10/2015  
 CHECKED BY: DHL  
 CITY OF WADSWORTH ENGINEERING  
 NORTH  
 GRADING & STORM WATER POLLUTION PREVENTION PLAN  
 2015-518 PARK CENTER COMMONS  
 15/45

SEE SHEET 15 OF 45



**NOTE:**  
DETENTION IS FOR THE ROADWAY SYSTEM ONLY. ALL  
SUBLOTS WILL BE REQUIRED TO DESIGN AND INSTALL  
DETENTION FACILITIES IN ACCORDANCE WITH THE CITY OF  
WADSWORTH REGULATIONS.

**NOTE:**  
DETENTION IS FOR THE ROADWAY SYSTEM ONLY. ALL  
SUBLOTS WILL BE REQUIRED TO DESIGN AND INSTALL  
DETENTION FACILITIES IN ACCORDANCE WITH THE CITY OF  
WADSWORTH REGULATIONS.

**NOTE:**  
DETENTION IS FOR THE ROADWAY SYSTEM ONLY. ALL  
SUBLOTS WILL BE REQUIRED TO DESIGN AND INSTALL  
DETENTION FACILITIES IN ACCORDANCE WITH THE CITY OF  
WADSWORTH REGULATIONS.

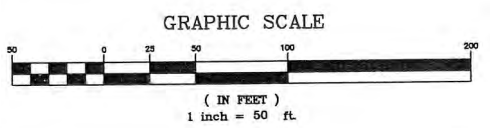
**NOTES:**  
SEE SHEET 14 FOR S.W.P.P. PLAN NOTES, DIRECTIONS, AND SCHEDULE.  
SEE SHEET 16 FOR CONTINUATION OF S.W.P.P. PLAN OF SITE.  
SEE SHEETS 44 AND 45 FOR EROSION CONTROL DETAILS.

**SYMBOLS**

- STORM SYMBOLS**
- - EXISTING STORM MANHOLE
  - - EXISTING STORM CURB BASIN
  - - EXISTING STORM CATCH BASIN
  - - PROPOSED STORM CATCH BASIN

- MISCELLANEOUS SYMBOLS**
- +— - SILT FENCE
  - - INLET PROTECTION
  - - CHECK DAM
  - - CONSTRUCTION DRIVE
  - WUB - HYDROLOGIC SOIL GROUP
  - ↑ - OVER LAND FLOOD ROUTE

**BENCHMARK:**  
EXISTING SANITARY MANHOLE M.C.S.E. GIS# 10288  
STA. 14+51.22, 32.28' RT. SMOKERISE DRIVE  
RIM = 1249.19'



— PLAN PREPARED BY —  
**LEWIS LAND PROFESSIONALS INC.**

**LEWIS LAND PROFESSIONALS** CIVIL ENGINEERING LAND SURVEYING  
8691 WADSWORTH ROAD SUITE 100  
WADSWORTH, OH 44281 (330) 335-8232

E:\2014\2014-00-09\14-06\14-063\14-063 SHPP PLAN 2.DWG

RESCALE/9/20016 REV : 12/16/15  
REV : 10/29/2015  
DRAWN BY: TAW REV : 9/10/2015  
CHECKED BY: DHL DATE: 6/19/2015

**CITY OF WADSWORTH**  
ENGINEERING



GRADING & STORM WATER  
POLLUTION PREVENTION PLAN

2015-518  
PARK CENTER COMMONS

16  
45

M.C.S.E PROJECT #S-900/00-54.1